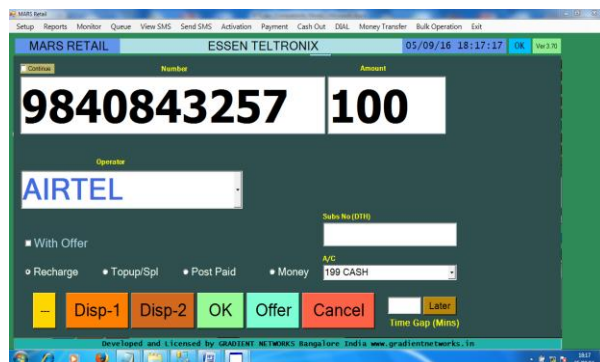


MARS RETAIL

Desktop and Android App for Recharge outlets

Recharge Faster Manage better

MARS (Mobile Automatic Recharge System) RETAIL for retail outlets automates recharge processes, tracks responses and provides comprehensive reports. With years of experience in providing automation solutions and pioneering work in prepaid recharge market, Gradient Networks brings to you a solution that saves time, reduces cost and increases efficiency. With no frequent replacement of phones, reduced manpower and elimination of revenue leakage, the product pays for itself in a few months.



MARS RETAIL KEYPAD



Features

- GSM Modems are connected to Android tablet through Wi-Fi and Desktop through Ethernet
- Industrial grade modems with long working life
- Supports 4 to 16 Direct Ports (SIMs)
- Supports 8 Mapped Ports (DTH)
- Simultaneous recharge on all SIMs
- Recharge, Activation, Offer Check Balance Check, Purchase and Bonus tracking can be done
- 4 different operations supported under recharge
Normal recharge, Top up, Post Paid payment and Mobile Money
- EC, USSD, SMS and API formats supported
- Facility to check offer and continue recharge
- Simple User Interface
- All response SMSs from operators tracked automatically
- Recharges are grouped as Success and Failure automatically
- Can track 4 different Balances (Wallets) on each SIM
- Purchase and Bonus tracked independently for each Wallet
- User Display to take Customer input on Number and Amount.
- Customer can enter number and amount on his own or confirm values typed by you
- Comprehensive Reports including
 - Recharge Report
 - Purchase Report
 - Bonus Report
 - SIM report
 - Daily report
 - SMS report
- Facility to dial and make voice calls
- Optional Battery charger pack to run the modems on Battery
- Long term support for hardware and software

ESSEN TELTRONIX

4/5B, IInd Floor, 100 Feet Road, (Next to Golden Ganesan Kalyana Mandapam),
Vadapalani, Chennai-600 026.

Mobile No: 98408 43257.

Mail-Id: muruganvertex@gmail.com

Web: www.essenteltronix.in